



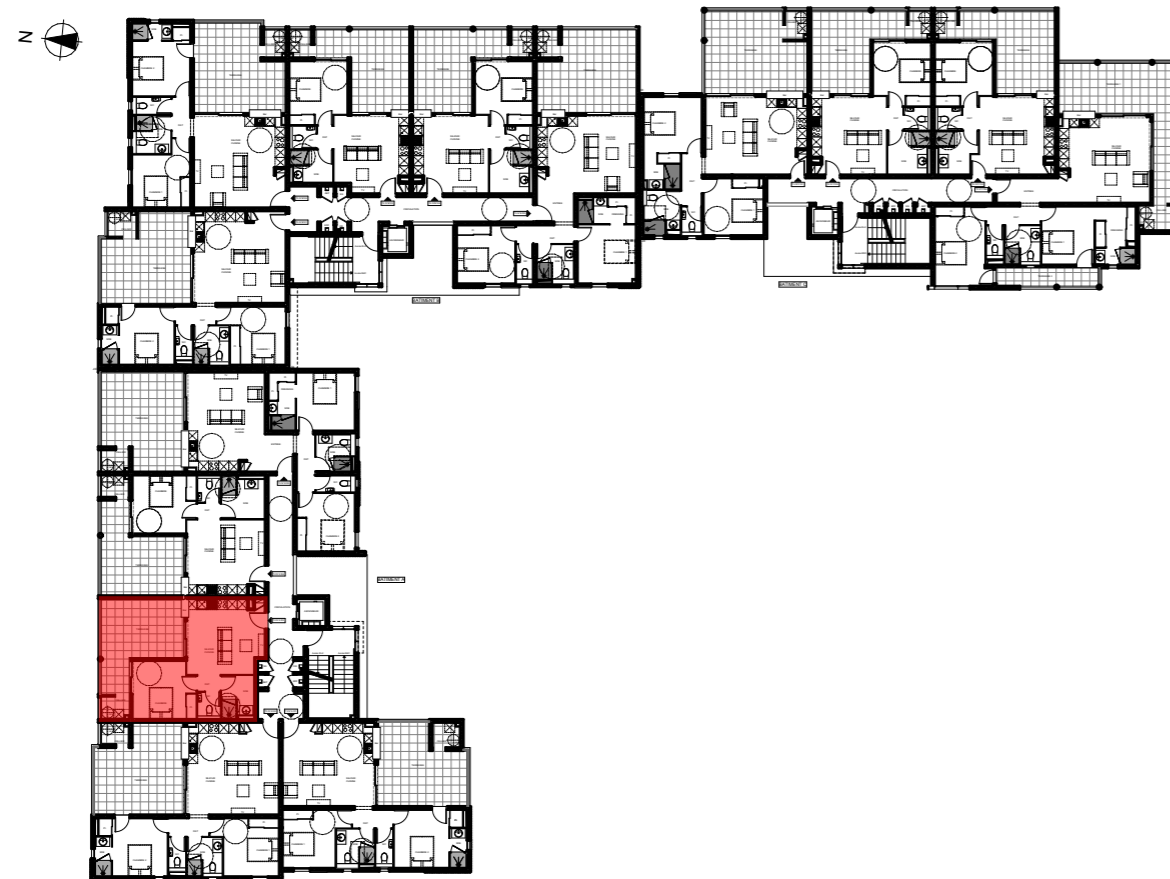
PLAN DE MASSE

RESIDENCE GREEN PARK

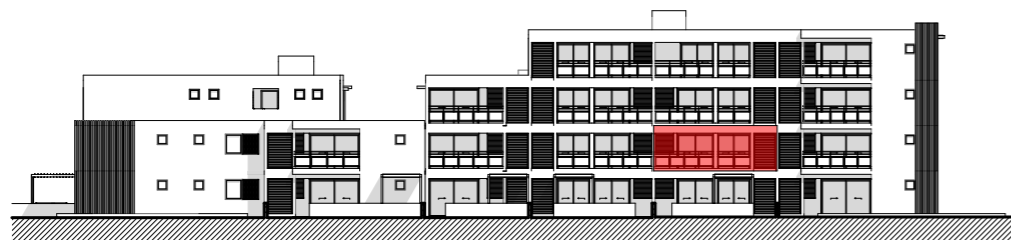
ROUTE DE RAVINE VILAINE - RD47
97200 FORT DE FRANCE

BÂTIMENT A R+1 - APPARTEMENT T2 N° A 103
STATIONNEMENTS N° 77 et 78

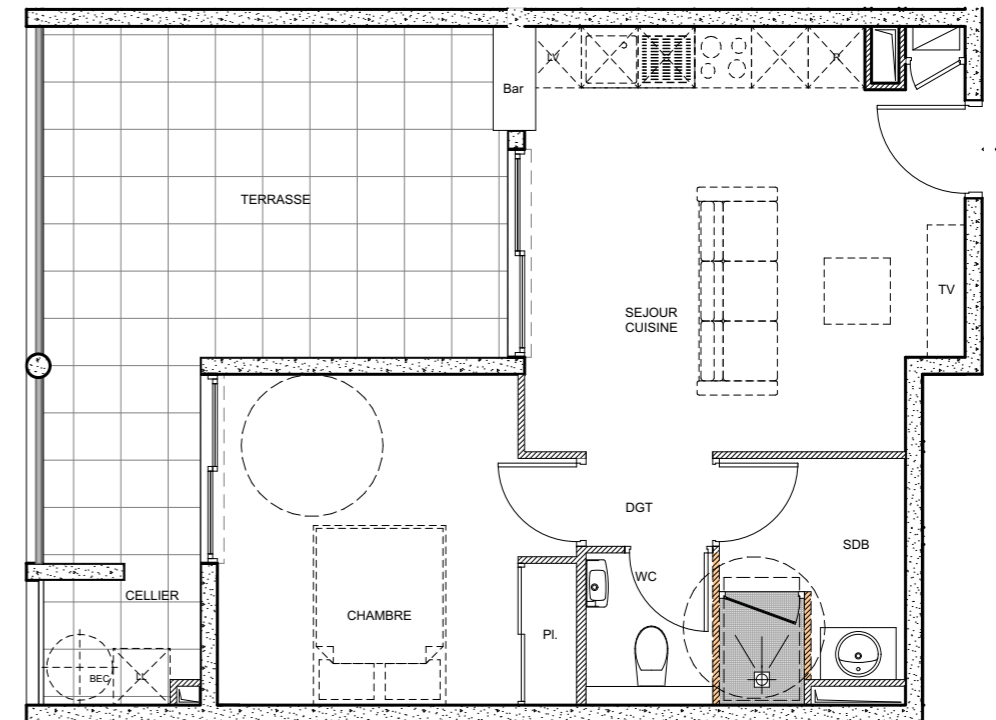
BILAN DE SURFACES	
Désignations	M2
Séjour / cuisine	20,05
Chambre	12,75
Dgt	1,25
SdB	4,85
Wc	2,16
SURFACE HABITABLE	41,06
Terrasse	20,8
Cellier	2,11
SURFACE UTILE	63,97



PLAN DE NIVEAU - R+1



FACADE NORD - BATIMENTS A ET B



PLAN APPARTEMENT

