



Document non contractuel

FACADE ENTREE



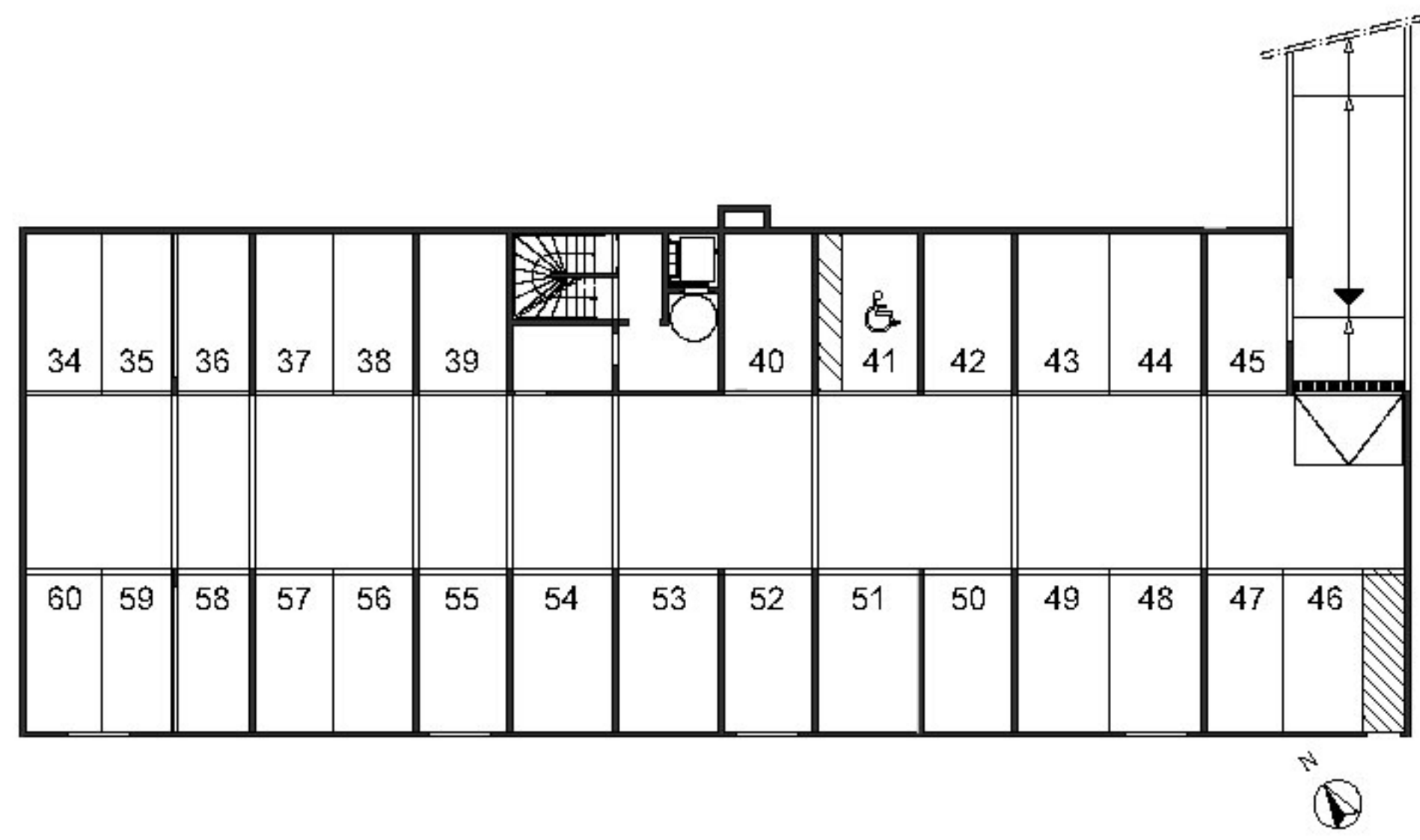
Document non contractuel

FACADE BAIE

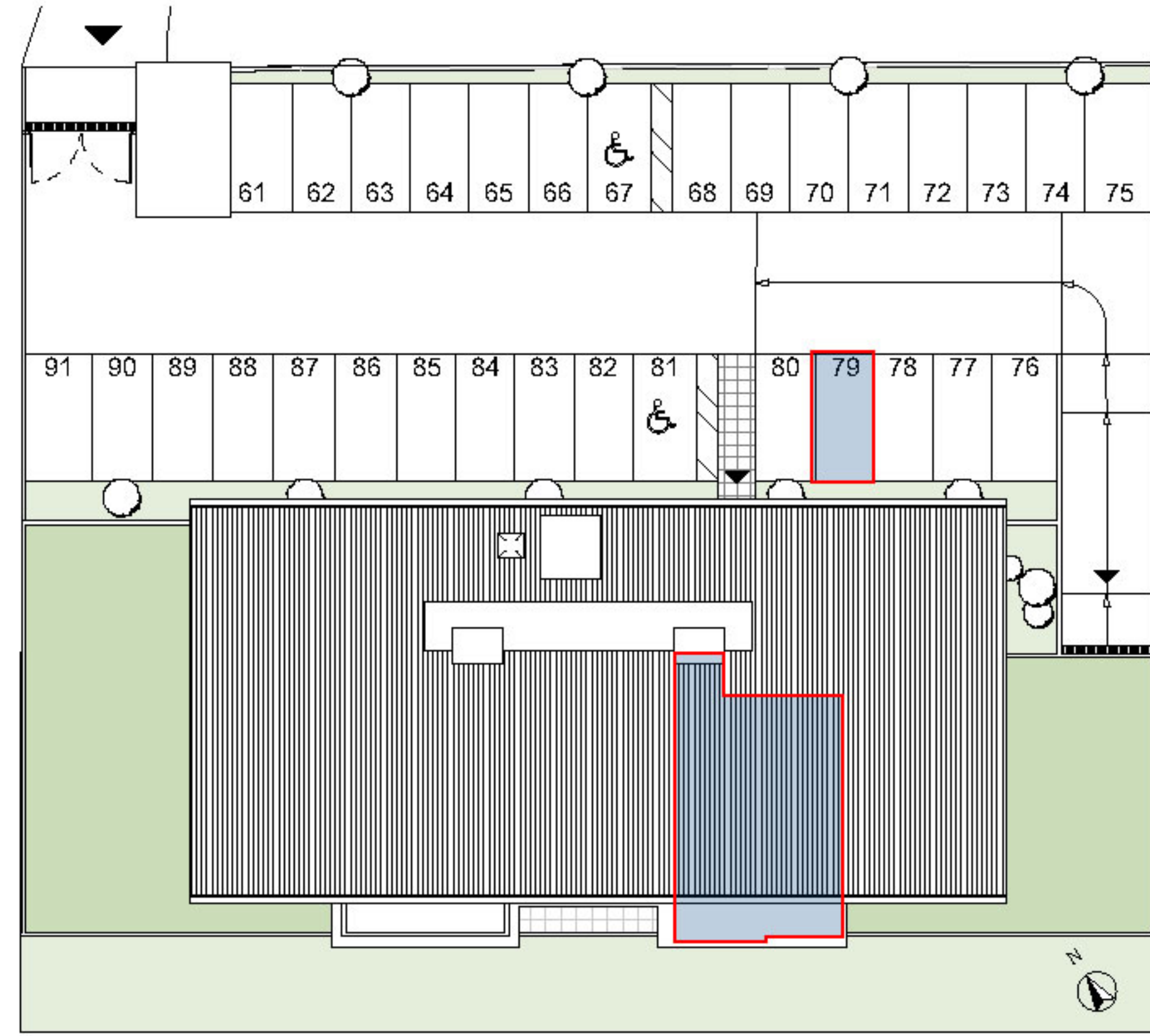
RESIDENCE LES TERRASSES DE LA BAIE 2

ZAC L'ETANG Z'ABRICOT
97200 FORT-DE-FRANCE

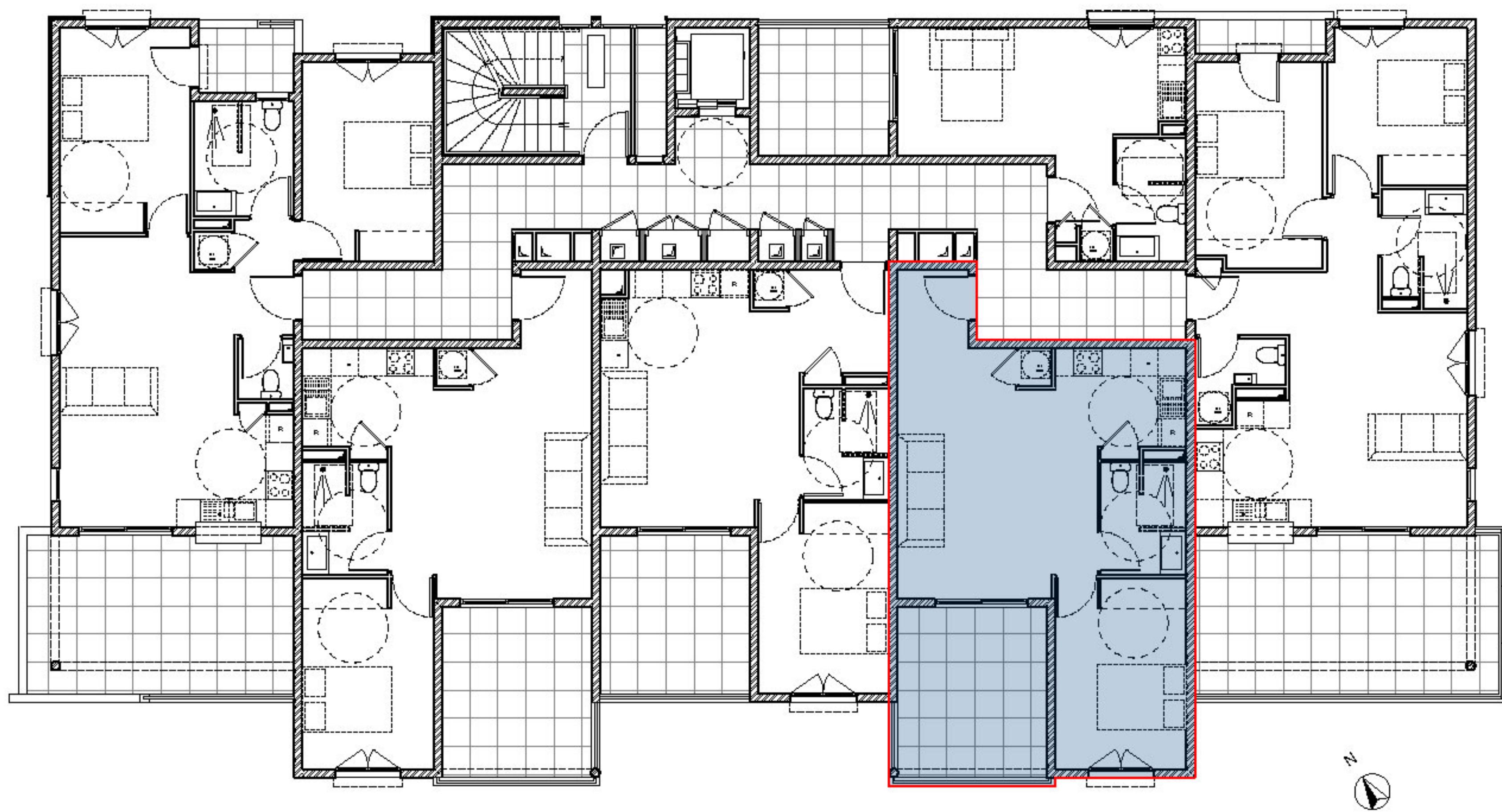
APPARTEMENT N°15 - T2 - R+2
STATIONNEMENT N°79



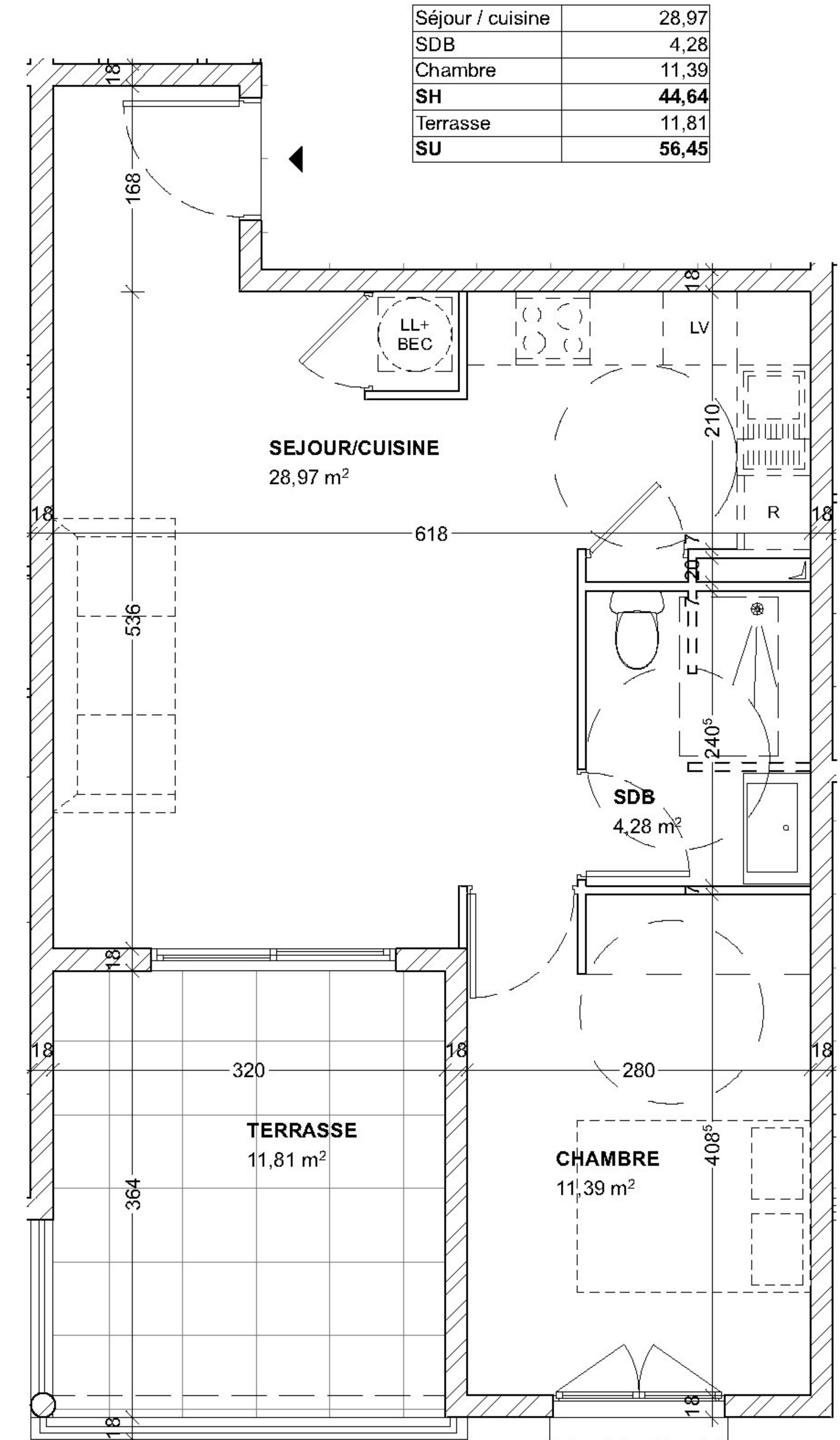
PLAN DE SOUS-SOL - PARKING



PLAN MASSE



PLAN NIVEAU



Séjour / cuisine	28,97
SDB	4,28
Chambre	11,39
SH	44,64
Terrasse	11,81
SU	56,45

LL+
BEC

SEJOUR/COUISINE
28,97 m²

SDB
4,28 m²

TERRASSE
11,81 m²

CHAMBRE
11,39 m²

PLAN APPARTEMENT